

Copies of this map are available at nominal cost
 Contact:
 Pennsylvania Department of Transportation
 Sales Store
 P.O. Box 2028
 Harrisburg, Pennsylvania 17105-2028
 Telephone: (717) 787-6746

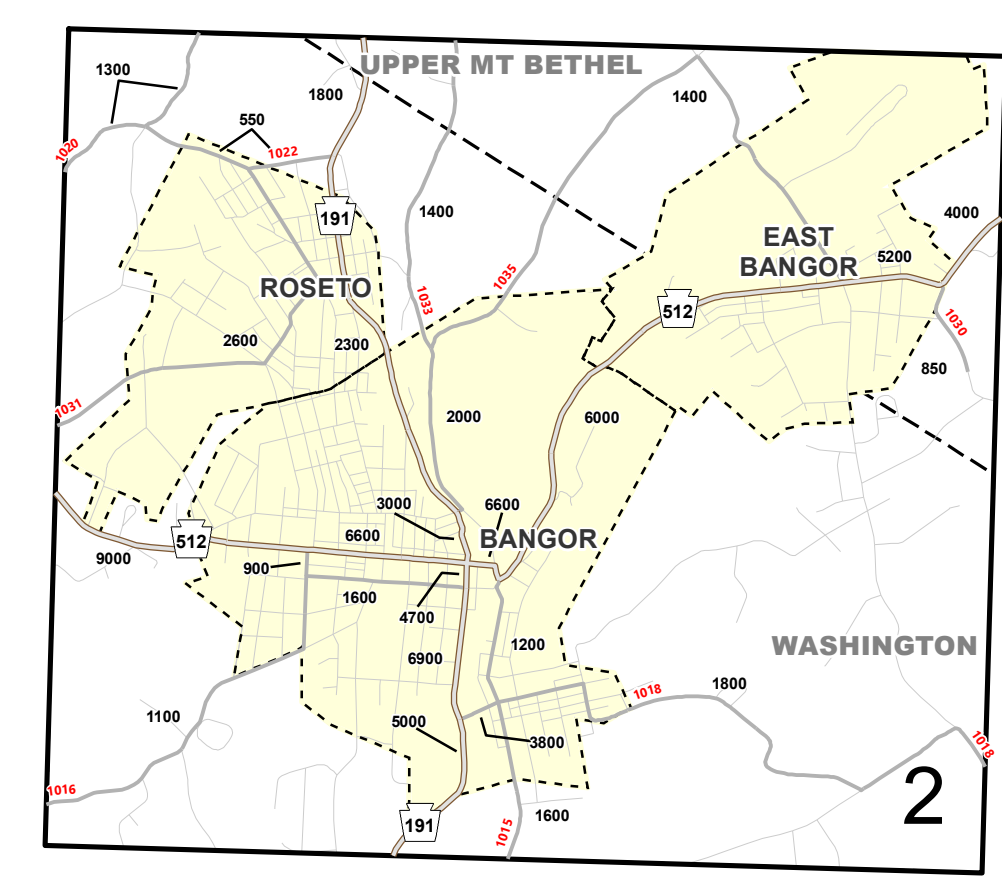
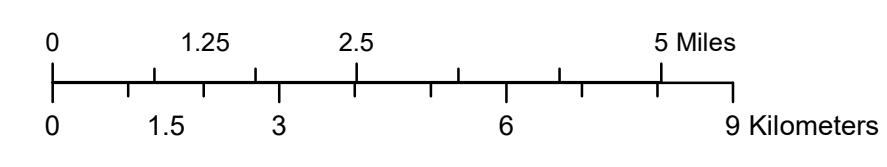
The commonwealth makes no warranty or representation, either expressed or implied, with respect to traffic volume data, including its quality, merchantability, or fitness for a particular purpose.

The data is provided "as is" and the user assumes the entire risk as to its quality and performance.

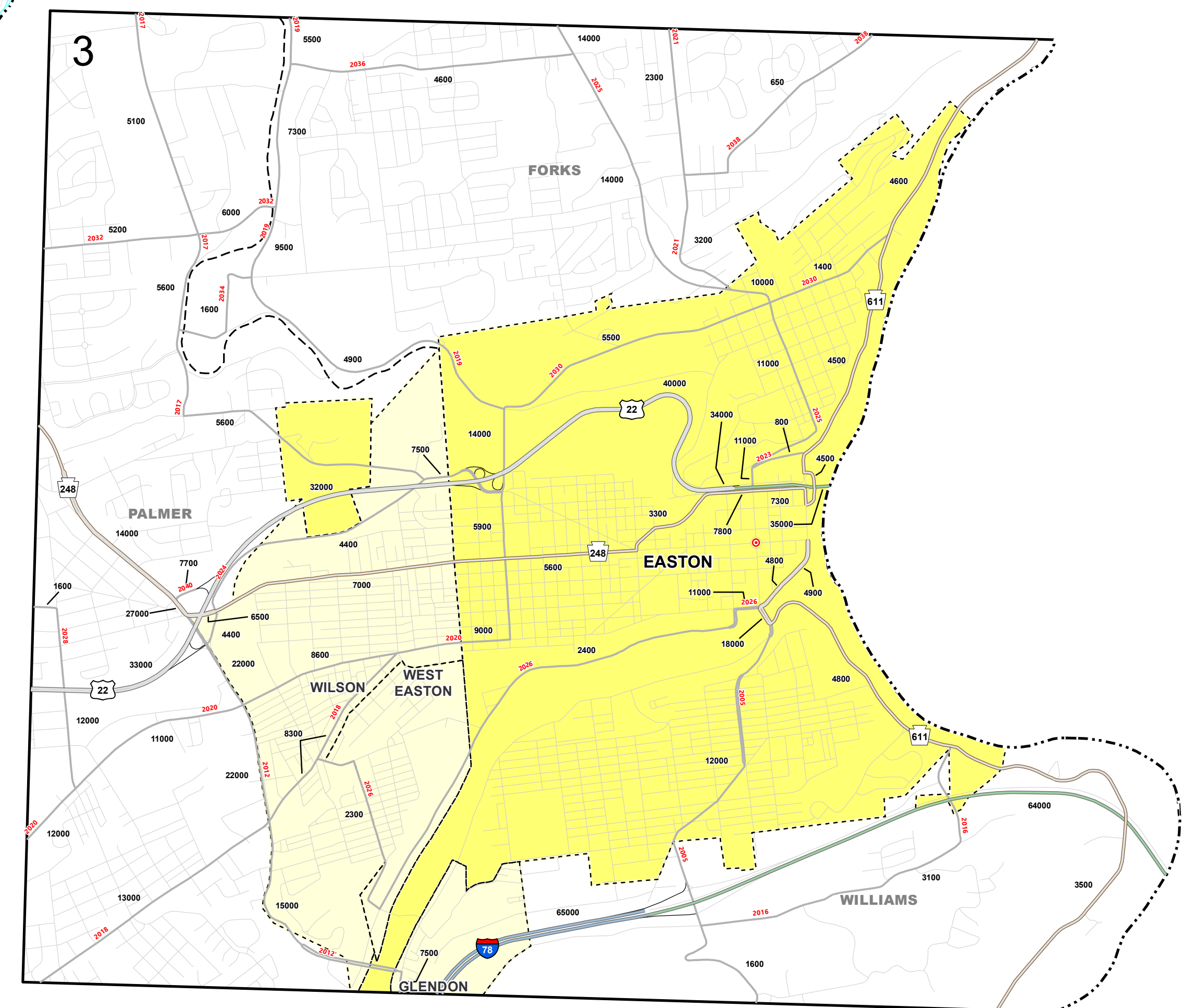
- LEGEND**
- State Boundary
 - County Boundary
 - Borough Boundary
 - City Boundary
 - Fully Controlled Access (Interstate)
 - Fully Controlled Access (Toll)
 - US Route
 - PA Route
 - State Route
 - Local Road
 - County Seats
 - Traffic Volume Number
 - State Maintained Bridge

Volumes shown are annual average daily traffic based on the most current information available.

Enlargement scale is 3:1 unless noted otherwise.



2:1



3



2022
 AADT
 Traffic Volume Map
 Published August 2023

**Northampton County
 Pennsylvania**

Prepared by the
Pennsylvania Department of Transportation
 Bureau of Planning and Research
 Transportation Planning Division

In cooperation with the
U.S. Department of Transportation
 Federal Highway Administration

