

Copies of this map are available at nominal cost
Contact:
 Pennsylvania Department of Transportation
 Sales Store
 P.O. Box 2028
 Harrisburg, Pennsylvania 17105-2028
 Telephone: (717) 787 - 6748

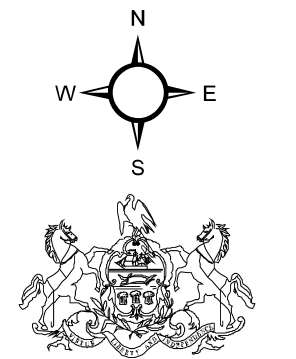
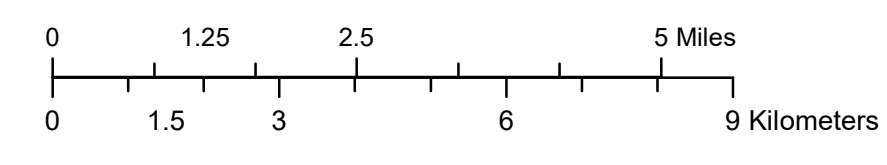
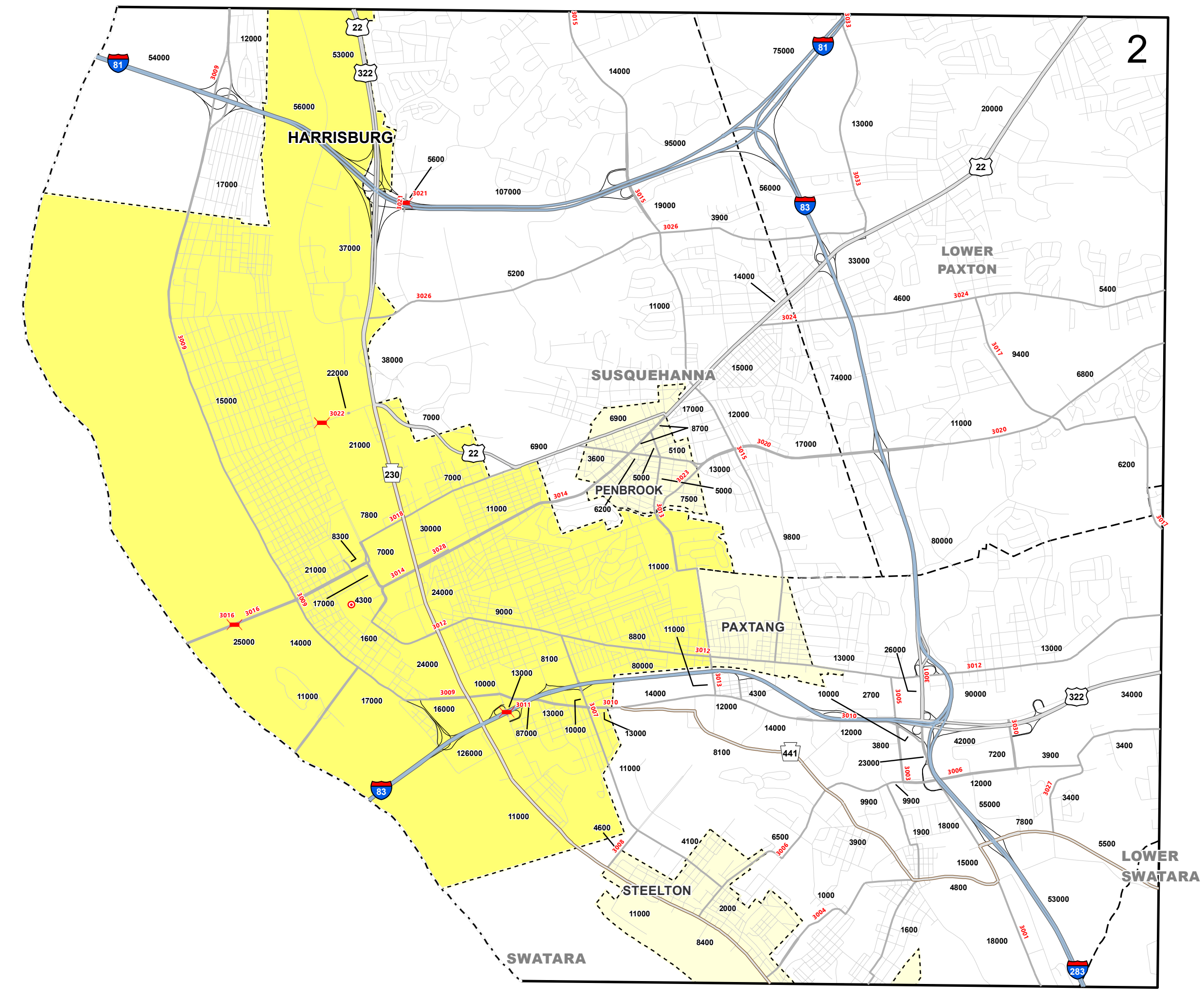
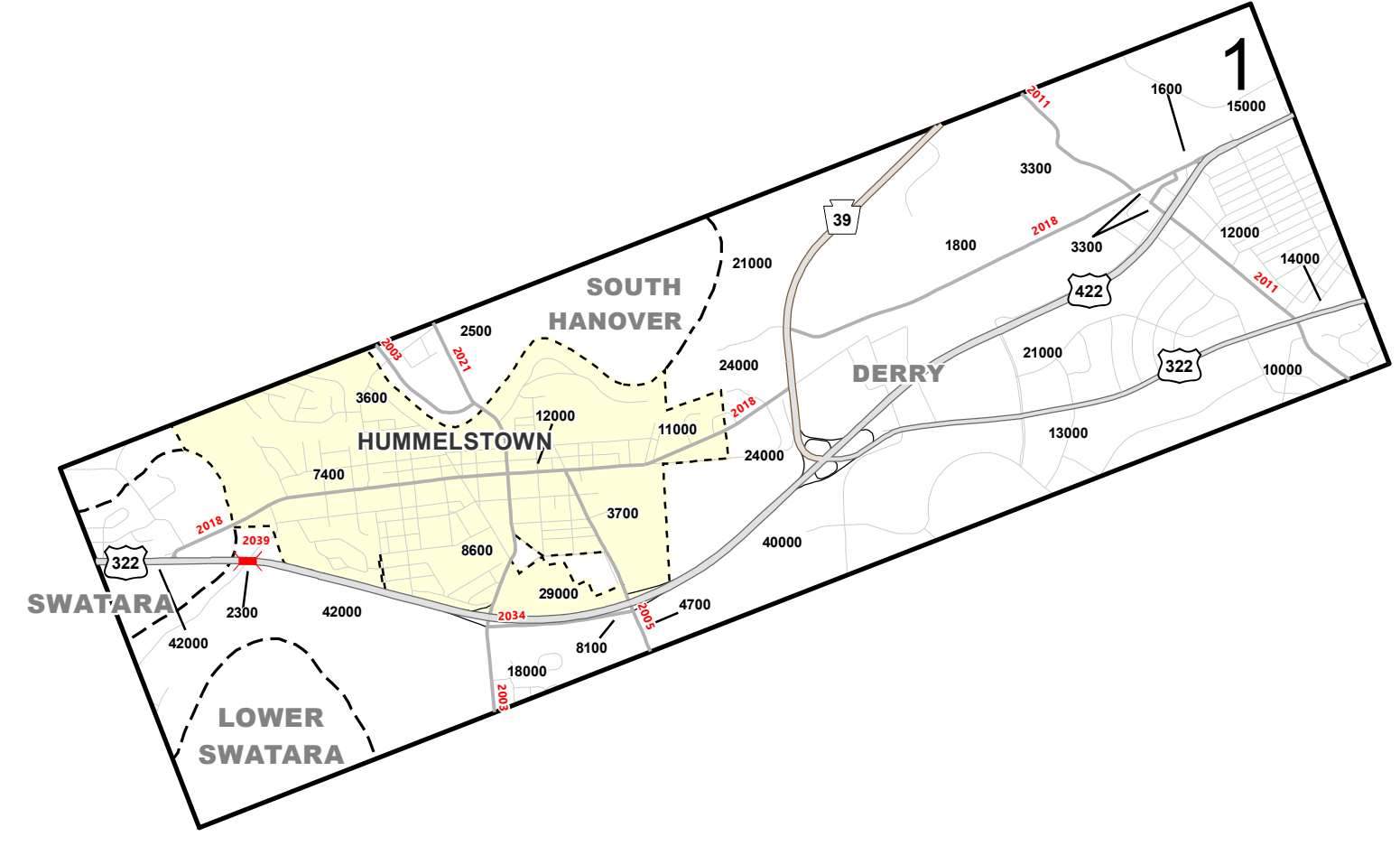
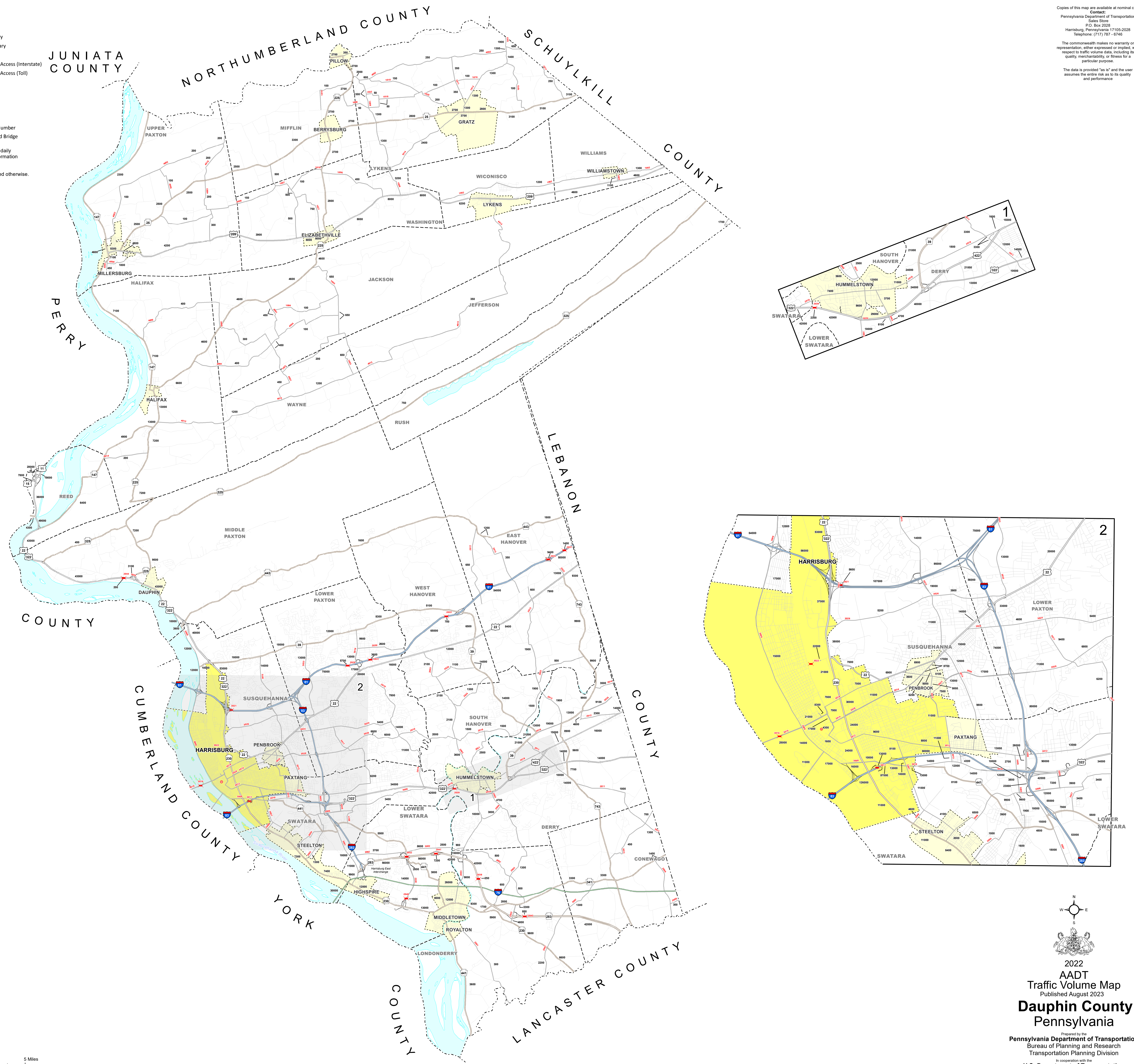
The Commonwealth makes no warranty or representation, either expressed or implied, with respect to traffic volume data, including its quality, merchantability, or fitness for a particular purpose.

The data is provided "as is" and the user assumes the entire risk as to its quality and performance.

- LEGEND**
- State Boundary
 - - - County Boundary
 - - - Borough Boundary
 - - - City Boundary
 - ▭ Fully Controlled Access (Interstate)
 - ▭ Fully Controlled Access (Toll)
 - ▬ US Route
 - ▬ PA Route
 - ▬ State Route
 - ▬ Local Road
 - County Seats
 - 1500 Traffic Volume Number
 - ▬ State Maintained Bridge

Volumes shown are annual average daily traffic based on the most current information available.

Enlargement scale is 2:1 unless noted otherwise.



2022
 AADT
 Traffic Volume Map
 Published August 2023

Dauphin County
 Pennsylvania

Prepared by the
 Pennsylvania Department of Transportation
 Bureau of Planning and Research
 Transportation Planning Division

In cooperation with the
 U.S. Department of Transportation
 Federal Highway Administration