

Copies of this map are available at nominal cost  
 Contact:  
 Pennsylvania Department of Transportation  
 Sales Store  
 P.O. Box 2025  
 Harrisburg, Pennsylvania 17105-2028  
 Telephone: (717) 761-4244

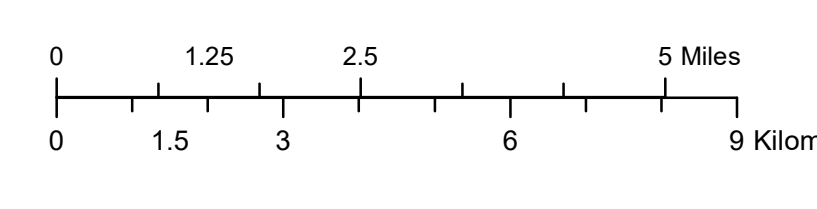
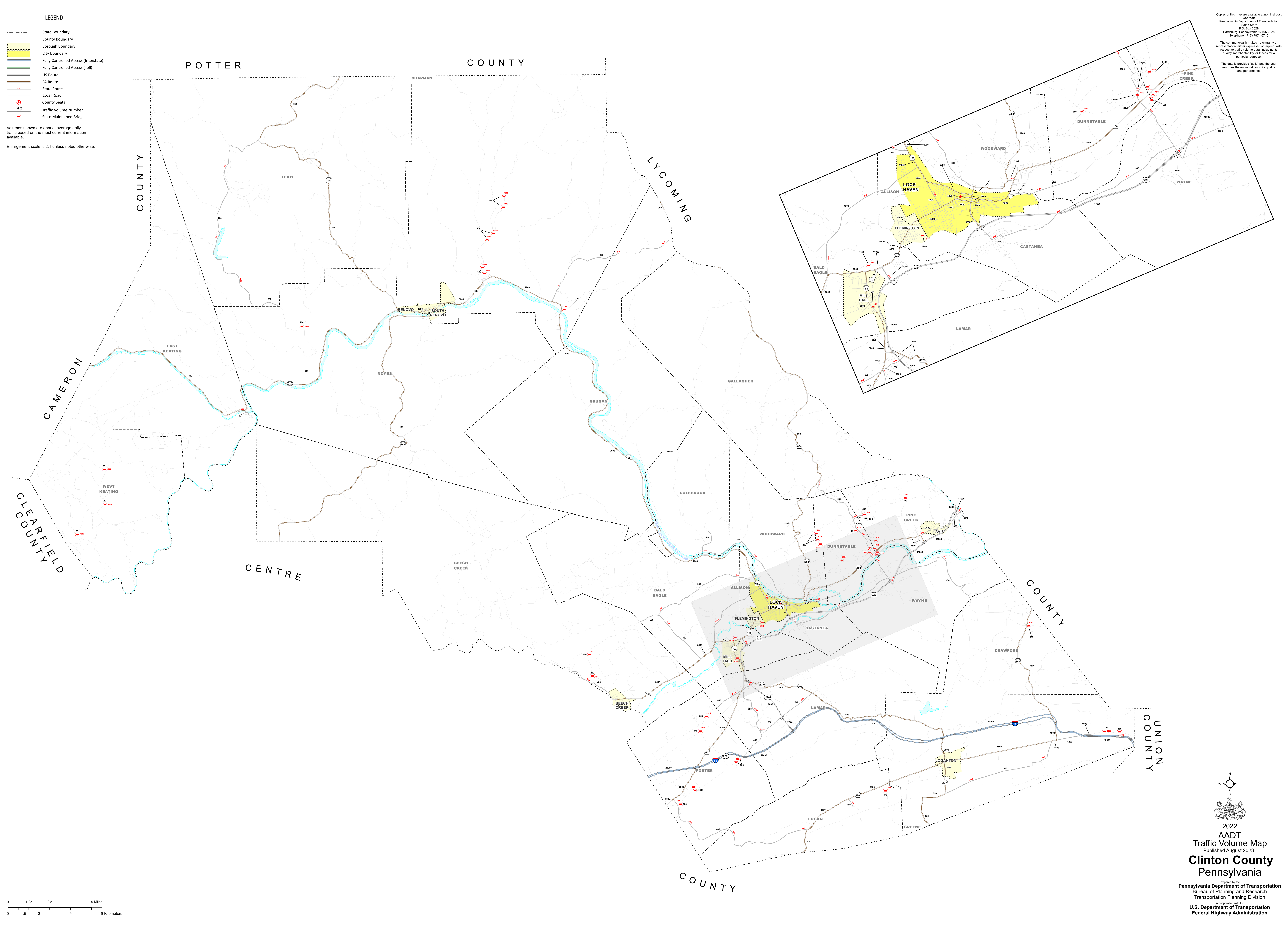
The commonwealth makes no warranty or representation, either expressed or implied, with respect to traffic volume data, including its quality, merchantability or fitness for a particular purpose.

The data is provided "as is" and the user assumes the entire risk as to its quality and performance.

- LEGEND**
-  State Boundary
  -  County Boundary
  -  Borough Boundary
  -  City Boundary
  -  Fully Controlled Access (Interstate)
  -  Fully Controlled Access (Toll)
  -  US Route
  -  PA Route
  -  State Route
  -  Local Road
  -  County Seats
  -  Traffic Volume Number
  -  State Maintained Bridge

Volumes shown are annual average daily traffic based on the most current information available.

Enlargement scale is 2:1 unless noted otherwise.



2022  
 AADT  
 Traffic Volume Map  
 Published August 2023  
**Clinton County**  
 Pennsylvania

Prepared by the  
 Pennsylvania Department of Transportation  
 Bureau of Planning and Research  
 Transportation Planning Division

In cooperation with the  
 U.S. Department of Transportation  
 Federal Highway Administration